

7:30pm – 9pm, Wednesday 20<sup>th</sup> September 2023, Christ the Prince of Peace Parish Hall, Portmore Way, KT13 8JD  
Organised by PPDRA with a focus on north Weybridge, and incorporating our AGM

*All interested Weybridge residents welcome!*

- Discover what's planned for Weybridge Library community hub
- Learn more about local community activities and clubs
- Meet your local councillors

**Guest speakers:** **Susan Wills MBE**, Assistant Director, Art, Culture, Heritage & Libraries, SCC  
**Tim Oliver**, Leader, Surrey County Council, divisional member for Weybridge

Plus the presence of **representatives from local voluntary community groups and clubs**, who will be happy to share information about local activities you can participate in.

***Come along and find out what's happening locally***

## Planning application submitted for Weybridge Library community hub

On 17 August 2023, Surrey County Council submitted a Consultation planning application to Elmbridge Borough Council: 2023/2312 - Weybridge Library Church Street Weybridge Surrey KT13 8DE.

**Description:** Consultation from Surrey County Council: Change of existing library, museum, public hall (Use Class F1) and Brooklands Radio (Class E) to new community hub to include library with single storey infill extension (Use Class F1), youth support

(Use Class F2), flexible community/commercial including public hall (Use Class F1/E) plus external alterations to existing elevations, installation of photovoltaic panels and roof top plant and associated parking and landscaping.

## From Library to community hub?

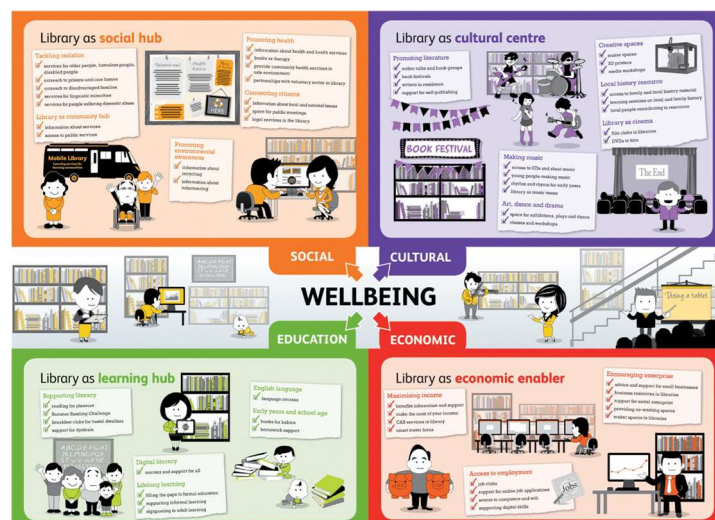
## Promoting collective wellbeing locally

While we recognise that some residents wish for a more comprehensive community hub, Surrey's plans for Weybridge Library include extended floor area, and the interior refitted to create highly flexible spaces that will host cultural events and community activities.

The plans are inspired by the Carnegie UK Trust model of Library as:

- Social Hub
- Cultural Centre
- Learning Hub
- Economic Enabler

Find out more at our PPDR Community Meeting on 20<sup>th</sup> Sept, 7:30pm, CPP Parish Hall, Portmore Way.



The Carnegie UK Trust model, inspiring Surrey libraries

## Why not join PPDRA? (Membership is now free, donations invited)

**A non-political association of local residents, supporting local heritage, quality of life and community**

- Open to anyone living between the High St and the rivers Wey and Thames, or with an interest in the area

**Membership of PPDRA helps give local people more of a voice on local matters**

**Go to [portmore.org.uk/join](https://portmore.org.uk/join), and join online**

- or email your name, address and contact details to [membership@portmore.org.uk](mailto:membership@portmore.org.uk)
- or deliver to: PPDRA Membership c/o 38 Portmore Park Road, KT13 8HU, or c/o 3 Clinton Close, KT13 8NU

**Support welcome! We rely on donations.** And are you interested in joining the committee? Let us know!

## PPDRA: Record of actions and results

We cover an area broadly between the High Street and the rivers, graced with lovely surroundings, but faced with traffic using our residential roads as through routes.

**PPDRA has a strong record of making a difference on significant local issues:**

- **Campaigning against dangerous rat run traffic** in our residential roads – helped get traffic calming measures and a north Weybridge 20mph zone, continued lobbying for 20mph east of Thames Street, around St James School
- **Helped prevent a huge twin loop junction at Walton Bridge** – which would have put roads over irreplaceable riverside land at Cowey Sale, and sent more traffic along Walton Lane and Thames St and through Portmore Park
- **Worked for 14 years to help overcome obstacles to the creation of Broadwater Path** – now a lovely lakeside path which gives public access to Broadwater, and opens the way for public funding to save the lake from silting up
- **Many years of liaising with the Environment Agency on riverside amenities and flood planning** – raised EA awareness of the value of the Thames Path on the riverside at Desborough Channel, and why the EA should change its plan to cut back the south riverbank, which would have displaced the Thames Path closer to Walton Lane traffic, as part of the River Thames flood scheme
- **Providing informed comment on major local planning applications** – helping residents influence the long term character of our local built environment
- **Traffic surveys to monitor local flows** – using the findings in lobbying Surrey County Council to make the Portmore Park area less of a rat run
- **Working with St George's Junior School on school traffic and parking** – continuing progress, meeting with the school regularly since 2003
- **Helping residents communicate with Surrey and Elmbridge Councils** – to get residents' voices heard better on local issues, including community facilities
- **Producing and distributing local newsletters** (to circa 1200 households) with information about significant local issues, plus our **website**, community meetings, and more.

## Local open spaces and riversides



Walton Lane Open Space - August 2023

PPDRA takes a strong interest in the conservation and care of our local green public open spaces and riversides. These are key to the character of our area, and help make north Weybridge a great place to live.

## Walton Lane Open Space now on course to become a protected Local Green Space

PPDRA made a formal objection to the omission of Walton Lane Open Space (the green riverside public space next to the canoe club) from the Elmbridge list of protected Local Green Spaces in the 2022 Draft Local Plan. We are delighted that it has now been included in the final Draft Local Plan, submitted to the Secretary of State on 10 August 2023.

It seems even more relevant given an underpublicised EBC Notice of Disposal of 11,400 sq metres of public open space land at Dorney Gardens, Walton Lane.

*View our submission about Local Green Spaces (including Walton Lane, Thames Street and other local spaces) for the Elmbridge Draft Local Plan consultation at [portmore.org.uk](https://portmore.org.uk)*

*Read more at [portmore.org.uk](https://portmore.org.uk)*

**Join PPDRA – help residents have more of a voice on local matters - [portmore.org.uk/join](https://portmore.org.uk/join)**

**Contact us – [contactus@portmore.org.uk](mailto:contactus@portmore.org.uk) – PPDRA c/o 3 Clinton Close, KT13 8NU, or c/o 38 Portmore Park Road, KT13 8HU**

**PPDRA Committee 2023:** Miles Macleod (Chair) Clinton Close, Tel 844449; Jane Heard (Secretary) PPR; Michael Freeman (Treasurer) PPR; Eleanor Butler, Church Walk; Lester Gange, Walton Lane; Sarah Jane Groves, Grendside Rd; Barbara Oates, Greenlands Rd; Pauline O'Sullivan, Wey Road; Diane Phillips, PPR; William Rutherford, Mount Pleasant.