

# NEWSLETTER

[www.portmore.org.uk](http://www.portmore.org.uk)

JANUARY 2024

A voluntary association supporting local heritage, quality of life and community

CONSULTATIONS SPECIAL

## Have your say on two major projects

*Two current consultations affect Weybridge residents:*

- **River Thames Scheme Statutory Consultation** (22 January – 4 March)  
– Plans for flood relief + a new Cycle/Footbridge from Desborough to Shepperton
- **Weybridge Community Hub plans** (25 January – 7 February)  
– Plans for Weybridge Library and community facilities

## River Thames Scheme Consultation (22 January – 4 March 2024)

The River Thames Scheme statutory consultation runs until 4 March 2024, and the latest plan includes exciting proposals which Weybridge residents have been seeking for years.

- While its flood relief elements largely benefit areas upstream of Weybridge, they now conserve Desborough Cut, increasing the flow here by lowering the riverbed downstream
- Its landscaping proposals contain a major win for those of us who have campaigned for better sustainable travel linkage between Weybridge and Shepperton and green spaces beyond

Plans for a **new pedestrian/cycle bridge across the River Thames from Desborough Island** give access to a network of green areas alongside the new flood relief channels, sustainably linking communities from Weybridge to Staines via Shepperton, Thorpe and Egham Hythe.



Proposed new Thames foot/cycle crossing from Desborough Island and across a new Flood Relief Channel weir

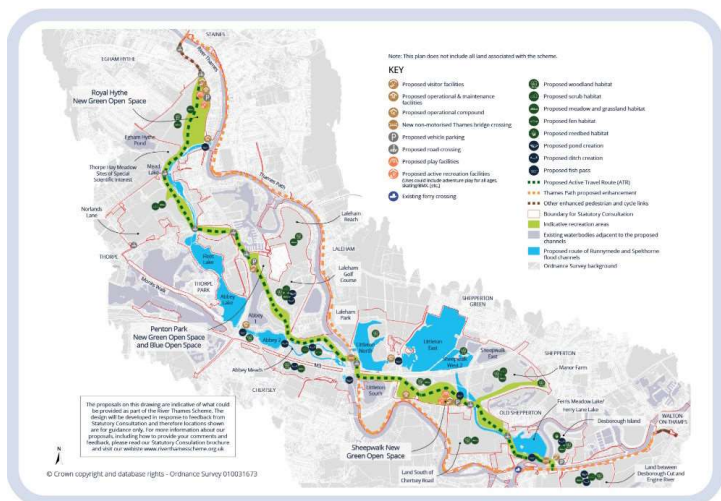
**The consultation is open to all.** There will be RTS Consultation drop in events and exhibitions at a variety of local venues in the coming weeks.

See [portmore.org.uk](http://portmore.org.uk) for locations and dates.

PPDRA has participated in consultations from the start of the River Thames Scheme. We originally had serious concerns about potential negative local impact—of a flood relief channel discharging opposite D'Oyly Carte Island, and proposals to displace the Thames Path—but concerns were allayed by a series of detailed flood modelling discussions from 2015 onwards.

These helped establish that lowering the riverbed downstream of Desborough Island would have a more positive effect on flood relief than widening the Cut. And we have repeatedly lobbied for a local bridge.

**Read more about RTS consultations** and PPDRA questions and answers at [portmore.org.uk](http://portmore.org.uk).  
**Your views can help shape the final design!**



Proposed active travel routes accessible from Weybridge

## Weybridge Community Hub Consultation (25 January – 7 February)

A Surrey County Council consultation shares the plans for an improved modern Library and Community Hub building in Weybridge. Residents can view the plans for the design of the library / community hub online & in Weybridge Library until 7th February 2024, and input ideas about furniture layout and future library events.

### SCC Overview

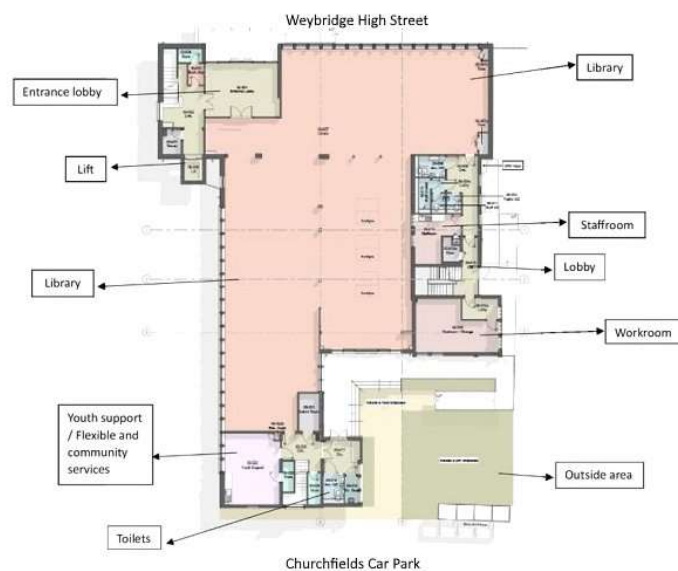
The proposed new Hub will provide a modern library, space for targeted youth support, improved space for Brooklands Radio, a large multi-use activity hub and meeting rooms for public hire and commercially lettable spaces.

The scheme encompasses:

- external refurbishment of the existing structure
- single storey rear infill expanding the ground floor
- full internal refit of all interiors
- improvement to the energy efficiency of the building



Impressions of children's library entrance, and flexible library shelving



Significantly extended ground floor of Library / Hub

### Initial local reactions?

We have heard a range of reactions locally, including:

**Relief** that we are not losing our Weybridge Library.

**Delight** that there is an inspired plan for a modern community-centred library, based on the Carnegie Model and drawing on local input.

**Disappointment** at other elements of the Community Hub plans, especially the Activity Hub.

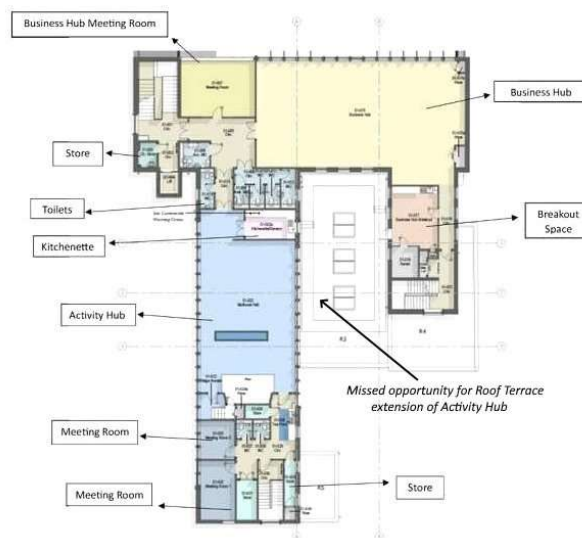
### Mix of success and dashed hopes

While the ground floor Library plans look excellent and worthy of wholehearted support, the same can't be said of what's proposed for other floors, where the plans largely follow existing room layout, and the Activity Hub space is reduced by the siting of toilets and kitchenette.

There is great disappointment that local hopes for an imaginative, flexible and future-proof community hub have not been better met in this first-floor redesign.

### What are your views?

Surrey County Council is accepting feedback until 7th February – there is information on their website, and you can find links to it at [portmore.org.uk](http://portmore.org.uk).



Unextended first floor of Hub

Proposals for extending the first floor Activity Hub with a simple roof terrace above the single storey library extension—increasing the Hub's flexibility & appeal for activities and functions—have been rejected on grounds of cost.

This is a once in a generation opportunity, and not something that can be retro-fitted.

Read more about the hub at [portmore.org.uk](http://portmore.org.uk)

**Join PPDR – help residents have more of a voice on local matters - [portmore.org.uk/join](http://portmore.org.uk/join)**

**Contact us – [contactus@portmore.org.uk](mailto:contactus@portmore.org.uk) – PPDR c/o 3 Clinton Close, KT13 8NU, or c/o 38 Portmore Park Road, KT13 8HU**

**PPDR Committee:** Miles Macleod (Chair) Clinton Close, Tel 844449; Jane Heard (Secretary) PPR; Michael Freeman (Treasurer) PPR; Eleanor Butler, Church Walk; Lester Gange, Walton Lane; Sarah Jane Groves, Grenside Rd; Pauline O'Sullivan, Wey Road; Diane Phillips, PPR; William Rutherford, Mount Pleasant.